



mideco

Your Partner in Environment Technology

BAT BOOTH 2.0

WHAT IS THE BAT[®] BOOTH 2.0?

Mideco's flagship dedusting solution, the Bat Booth, has been keeping personnel healthy in high-dust industrial areas around the world since 2014. The Bat Booth was created to solve some of the industrial sector's most pressing health concerns – respiratory illnesses caused by airborne dust silica, like silicosis, 'black lung' (or miner's lung), pneumonia and also non-respiratory issues such as heat stroke. It has been proven that a dusty uniform leads to dangerous exposure levels to respirable dust. Respirable dust particles are considered to have an aerodynamic diameter of 10 microns or less and are able to enter and deposit into the gas-exchange region of the lungs. Once clothes become contaminated, the person is more likely to be affected by respirable dust. Furthermore, the risk of dust exposure continues to remain until the dust source is cleaned or removed.

The Bat Booth Standard is the basic model which uses simple but effective technology to get rid of dust that has accumulated on the person's clothing in 10 seconds. On the back of the success of Bat Booth Standard, Mideco launched the Bat Booth Premium. The need for immediate reporting and smart data capturing along with effective dedusting and temperature monitoring has been the drive behind the creation of the Bat Booth Premium. It is based on the sleek, simple and effective design of the Bat Booth Standard. But its extra features make it a game-changer in quick and easy dedusting and health data management.

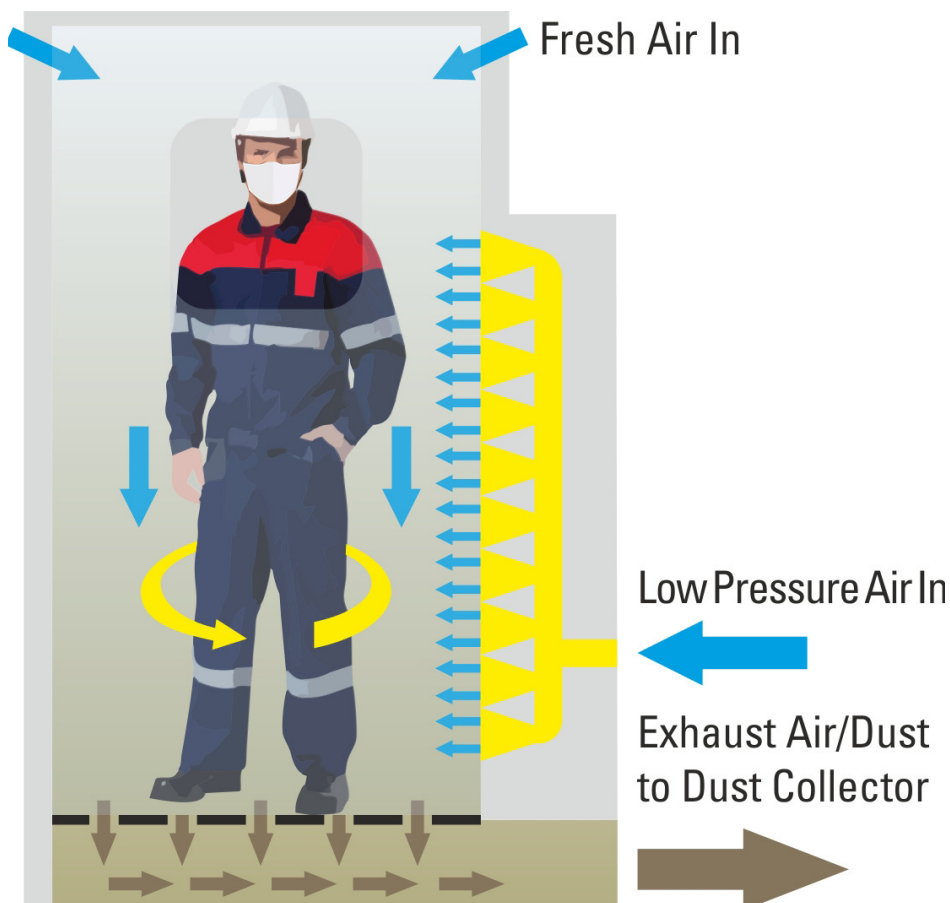
The Bat Booth Premium uses a medically calibrated infra-red sensor to measure the person's body temperature, which can catch early signs of heat stress in less than half a second and displays it on a screen immediately. The control panel inside the booth changes colour and displays an instruction based on the temperature. Thereafter, The Bat Booth Premium uses the National Institute for Occupational Health & Safety (NIOSH) design of high volume, low pressure compressed air to safely remove dust from the person's clothing.

MODE OF ACTION

The Bat Booth Standard's dust collector fan draws clean air into the booth through louvres mounted high on the side panels, creating a downdraft. Simultaneously, the dedusting air jets blow the dust off the person's clothing as they slowly turn around. The compressed air and dust are then carried with the clean air to the integrated dust collector.

During operation, the booth is maintained under negative pressure at all times. This simply means that all the dust removed is contained within the cleaning booth and captured by the dust collector before the cleaned air is exhausted. The Bat Booth Standard follows guidelines from the National Institute for Occupational Health and Safety (NIOSH).

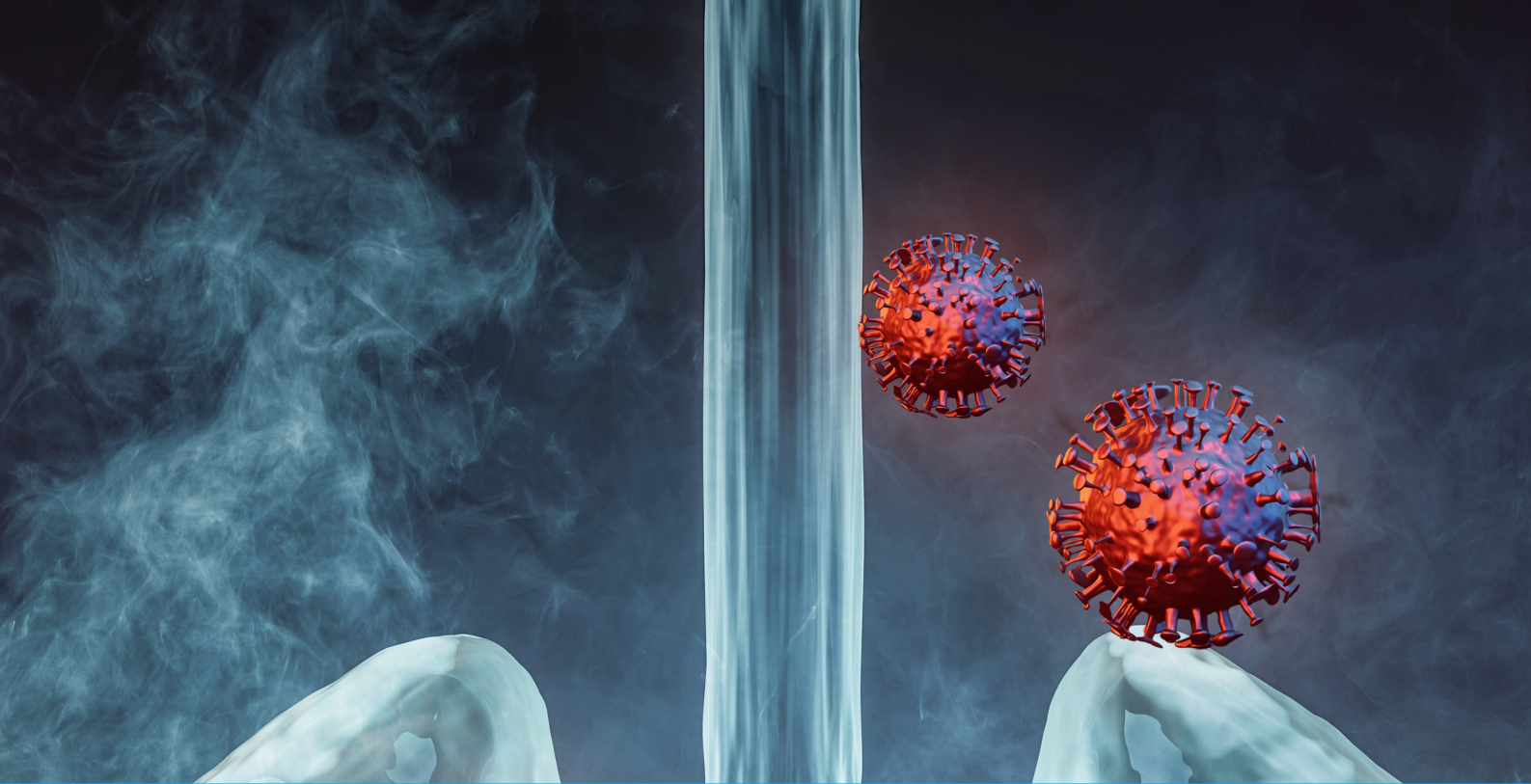
MODE OF ACTION FOR BAT BOOTH STANDARD



BEFORE



AFTER



EARLY DETECTION MEASURES

[BAT BOOTH PREMIUM]

HEAT STRESS

- Heat Stroke

BACTERIA

VIRUS

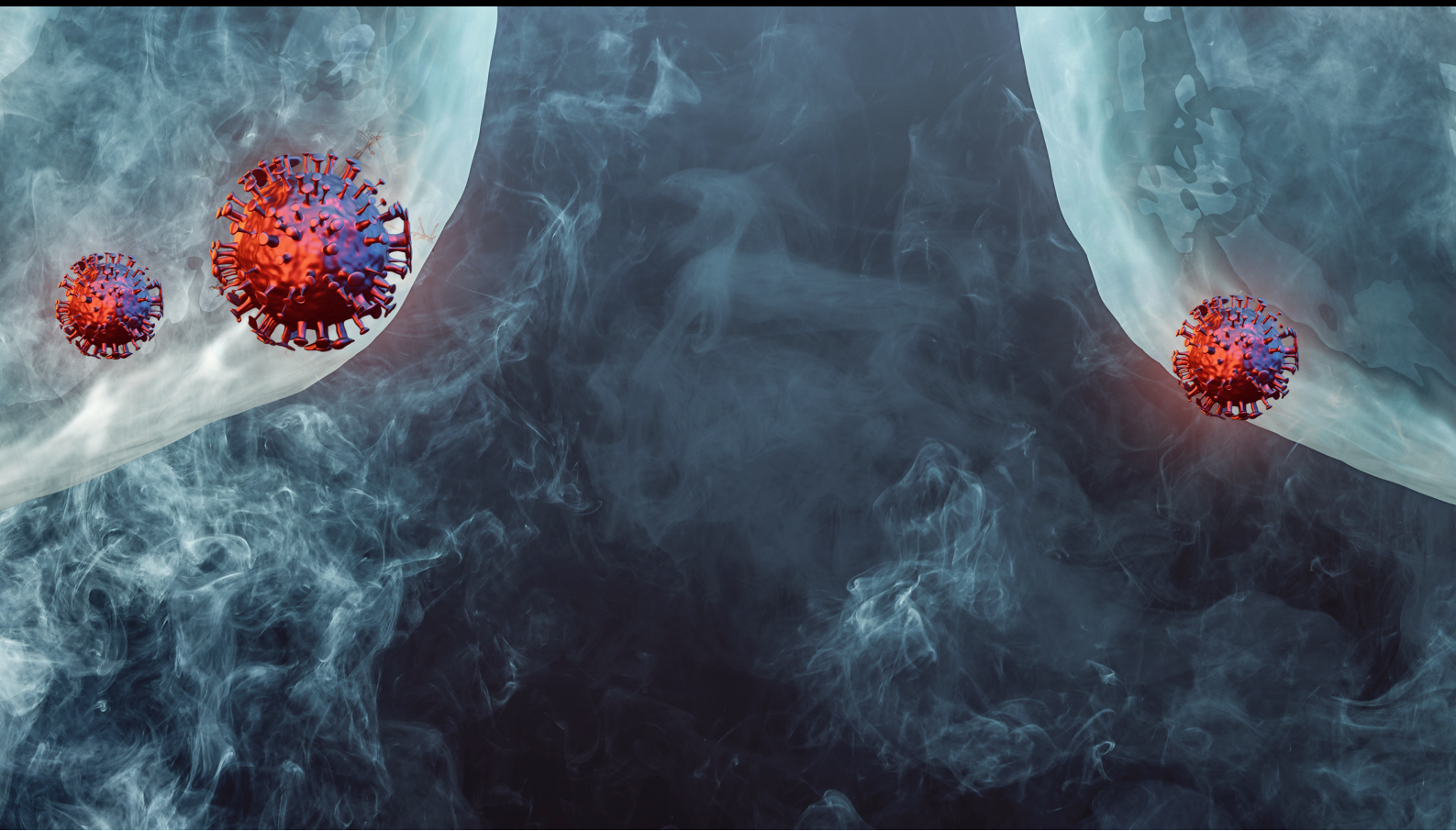
WHO NEEDS TO KNOW?

The Individual

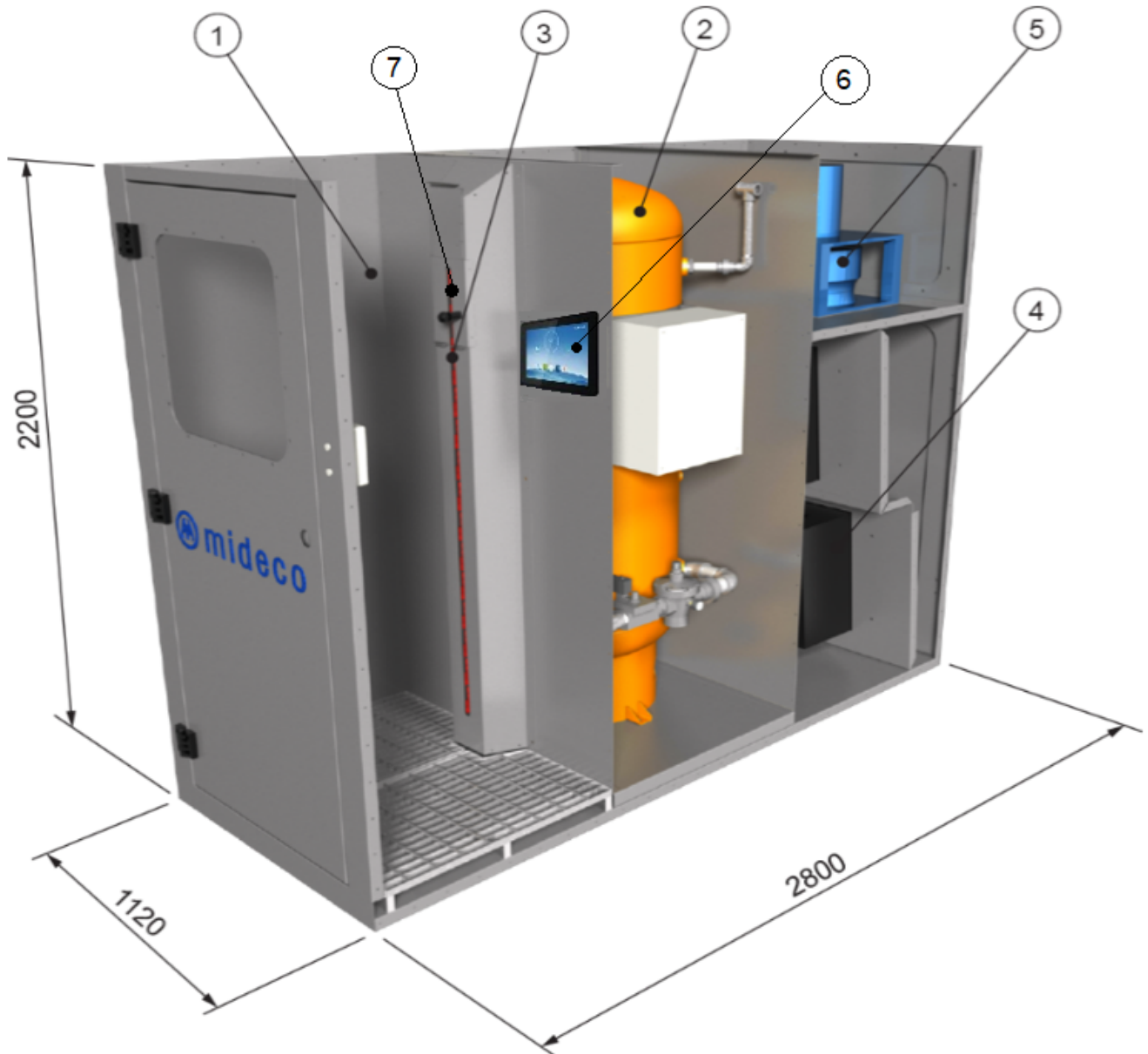
The First Responder

Officials Monitoring OH&S

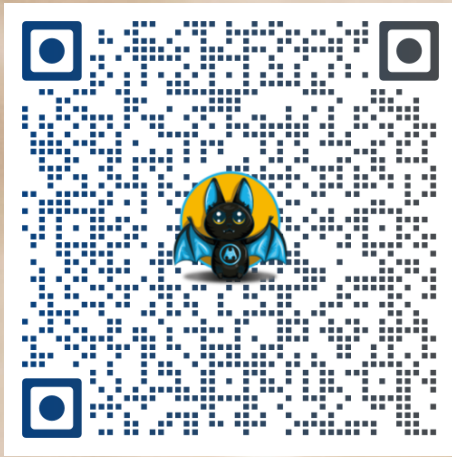
Many adverse conditions share high body temperature as an early sign. Regular measurements can alert us before they become critical.



PRODUCT COMPONENTS



1. CLEANING BOOTH
2. AIR RESERVOIR
3. AIR SPRAY MANIFOLD
4. DUST FILTERS
5. EXHAUST FAN
6. DIGITAL INTERFACE DEVICE
7. SLIDER WITH CAMERA AND INFRARED SENSOR

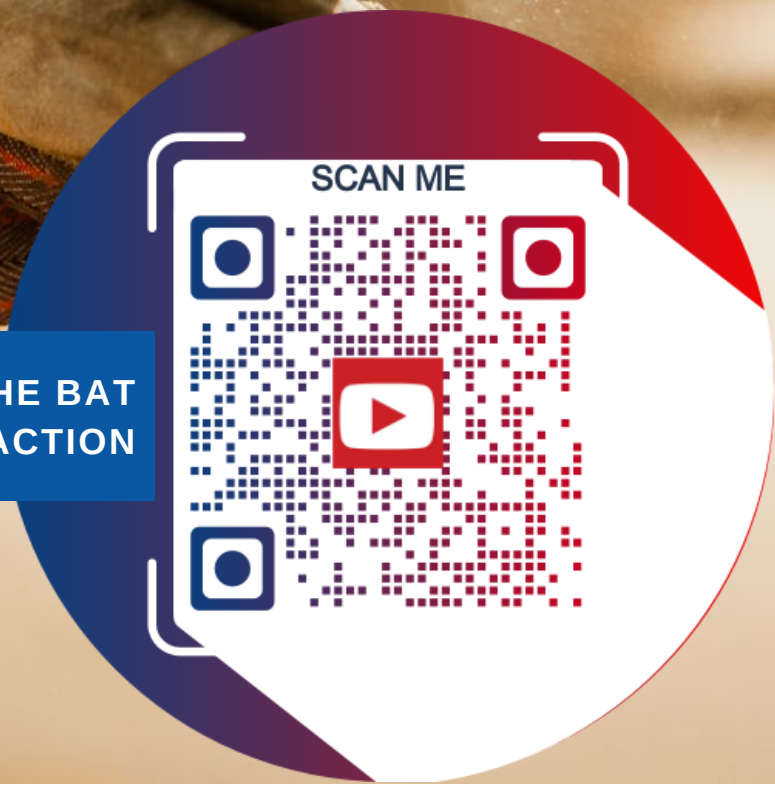


**SCAN TO VIEW
BAT VENT**



**SCAN TO VIEW
PRODUCTS**

**WATCH THE BAT
BOOTH 2.0 IN ACTION**





BAT BOOTH 2.0

www.MidecoHSE.com



While the Bat Booth 2.0 cleans contaminated dust from your clothes, Mideco's newly launched product, the **BAT VENT** combats respirable dust indoors. The Bat Vent prevents and minimizes risks in the workplace by purifying and filtering the air that enters offices or enclosures located near plants or facilities that cause dust emissions.

CONTACT US

Factory 2/63-71 Bayfield Rd East,
Bayswater North VIC 3153

sales@midecohse.com

[+61 3 8873 0200](tel:+61388730200)

www.midecoHSE.com

